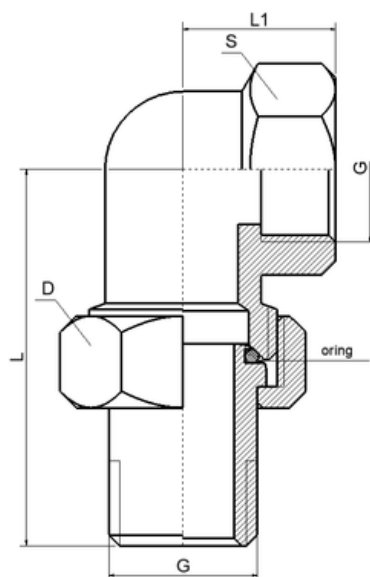




Śrubunek kątowy z oringiem



| Opis | | | | | Opakowanie ilość sztuk | | Masa jedn. | EAN | Index |
|------|----|------|----|----|------------------------|--------|------------|---------------|-------|
| G | L | L1 | D | S | woreczek | karton | [g] | | |
| 1/2" | 53 | 21,5 | 30 | 26 | - | 100 | 162 | 5901797700140 | 048 |
| 3/4" | 59 | 28 | 37 | 32 | - | 50 | 220 | 5901797700164 | 049 |
| 1" | 70 | 27 | 46 | 39 | - | 50 | 370 | 5901797700188 | 096 |
| 5/4" | 80 | 43 | 53 | 47 | - | 25 | 528 | 5901797702199 | 427 |
| 6/4" | 87 | 47 | 64 | 54 | - | 25 | 742 | 5901797702656 | 483 |

Charakterystyka

Materiał: CW617N

Max ciśnienie robocze: 16 bar

Max temperatura robocza: +110°C

Atesty



Atest Higieniczny B.BK.60110.0264.2024
Narodowego Instytutu Zdrowia Publicznego